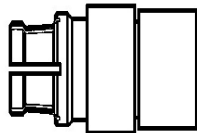


GK086FFBHF-015CM

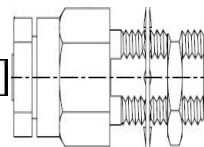
Connector 1

GPPO (SMPM) Female Jack 65 GHz



Connector 2

2.92mm Female Bulkhead Jack 40 GHz



Length Dimensions inch/cm
Overall end-to-end: 5.98/15.19
Between Ref. Planes: 5.91/15
Less Connectors: 4.81/12.21
C1 Ref. Plane (R/P): 0/0
C2 Ref. Plane (R/P): 0.075/0.19

Cable Type: 0.086" Hand Formable, RoHS
Jacket: None
Length: 15 cm long between interfaces
Phase matching: N/A
Test Data: N/A
Rotation: N/A

Cable Marker typically placed center cable includes P/N, Serial, and Manufacturer

These specifications are subject to change without notice.

Component images are not to scale.

SPECIFICATIONS:

FREQUENCY RANGE: DC to 40 GHZ

RETURN LOSS: Unspecified

INSERTION LOSS (up to above frequency limit): <1.1 dB/ft @ 18 GHz, <1.4 dB/ft @ 27 GHz, <2.0 dB/ft @ 40 GHz, <2.4 dB/ft @ 67 GHz (typical), +0.3 dB per connector

CONNECTOR 1: GPPO/SMPM F, direct solder, straight, genuine Corning Gilbert P/N: B014-D11-01, or equivalent

CONNECTOR 2: 2.92mm F, direct solder, straight, bulkhead, Precision Connector Inc. P/N: 3187, or equivalent

CABLE TYPE: Hand-Formable (tin-dipped woven copper braid outer conductor), (magnetic steel wire center conductor), 0.086" (2.2mm) diameter nominal, Micro-Coax P/N: UT-85-Form (select 67 GHz stocks), or equivalent

MINIMUM INSIDE BEND RADIUS: 0.125" (3.2mm) installation, 0.375" (9.5mm) continuous flexing

SOLDER: 96.5Sn3.0Ag0.5Cu (SAC305) Pb-free, COMPLIANT WITH EU Directive RoHS 3 (2015/863)

RF COAX INC.

1725 San Felipe Road, Suite 3
Hollister, CA 95023 USA
TEL: 831-635-0820, FAX: 831-785-2990
sales@rfcoax.com www.rfcoax.com
All rights reserved
File No: 0.06/0.14,5.367/13.63,0.12/0.3

CAGE 1WF56

RF Cable Assembly, GPPO F to 2.92mm F BH, 0.086 hand-formable, 40 GHz, 15cm long between interfaces, RoHS

TYPE: Product Specification

REVISION: A **Date :** 05/11/2025

Item : GK086FFBHF-015CM