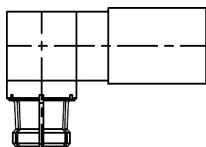


## GS086FRMHF-8

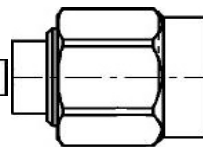
### Connector 1

GPPO (SMPM) Fem Jack Swept RA  
65 GHz



### Connector 2

SMA Male Plug 27 GHz



**Length Dimensions** inch/cm  
**Overall end-to-end:** 8/20.32  
**Between Ref. Planes:** 7.84/19.90  
**Less Connectors:** 7.25/18.41  
**C1 Ref. Plane (R/P):** 0.05/0.14  
**C2 Ref. Plane (R/P):** 0.11/0.28

**Cable Type:** 0.086" Hand Formable, RoHS  
**Jacket:** None  
**Length:** 8 inches long overall  
**Phase matching:** N/A  
**Test Data:** N/A  
**Rotation:** N/A

Cable Marker typically placed center cable includes P/N, Serial, and Manufacturer

**These specifications are subject to change without notice.**

**Component images are not to scale.**

### SPECIFICATIONS:

**FREQUENCY RANGE:** DC to 27 GHz

**RETURN LOSS:** Unspecified

**INSERTION LOSS (up to above frequency limit):** <1.1 dB/ft @ 18 GHz, <1.4 dB/ft @ 27 GHz, <2.0 dB/ft @ 40 GHz, <2.4 dB/ft @ 67 GHz (typical), +0.3 dB per connector

**CONNECTOR 1:** GPPO/SMPM F, direct solder, swept right angle, genuine Corning Gilbert P/N: B015-D11-01, or equivalent

**CONNECTOR 2:** SMA M, direct solder, straight, Radiall P/N: R125.052.002, or equivalent

**CABLE TYPE:** Hand-Formable (tin-dipped woven copper braid outer conductor), (magnetic steel wire center conductor), 0.086" (2.2mm) diameter nominal, Micro-Coax P/N: UT-85-Form (select 67 GHz stocks), or equivalent

**MINIMUM INSIDE BEND RADIUS:** 0.125" (3.2mm) installation, 0.375" (9.5mm) continuous flexing

**SOLDER:** 96.5Sn3.0Ag0.5Cu (SAC305) Pb-free, COMPLIANT WITH EU Directive RoHS 3 (2015/863)

## RF COAX INC.

1725 San Felipe Road, Suite 3  
Hollister, CA 95023 USA  
TEL: 831-635-0820, FAX: 831-785-2990  
sales@rfcoax.com www.rfcoax.com  
All rights reserved  
File No: 0.05/0.11,7.6/19.3,0.13/0.32

**CAGE 1WF56**

RF Cable Assembly, GPPO F RA to SMA M, 0.086 hand-formable, 27 GHz, 8-inches long overall, RoHS

**TYPE:** Product Specification

**REVISION:** A **Date :** 04/26/2025

**Item :** GS086FRMHF-8