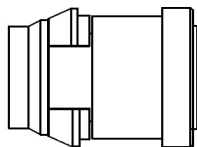


GS086MBFBSB-8R

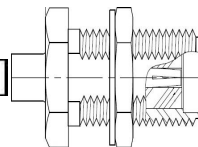
Connector 1

GPPO (SMPM) Male Bulkhead Plug
65 GHz



Connector 2

SMA Female Bulkhead Jack 27 GHz
(086)



Length Dimensions inch/cm
Overall end-to-end: 8/20.32
Between Ref. Planes: 7.84/19.92
Less Connectors: 7.02/17.84
C1 Ref. Plane (R/P): 0.08/0.21
C2 Ref. Plane (R/P): 0.08/0.19

Cable Type: 0.086" Semi-Rigid, SS-BeCu, cryogenic, RoHS
Jacket: None
Length: 8 inches long overall
Phase matching: N/A
Test Data: N/A
Rotation: N/A

Cable Marker typically placed center cable includes P/N, Serial, and Manufacturer

These specifications are subject to change without notice.

Component images are not to scale.

SPECIFICATIONS:

FREQUENCY RANGE: DC to 27 GHZ

RETURN LOSS: Unspecified

INSERTION LOSS (up to above frequency limit): <2 dB/ft @18 GHz, <2.9 dB/ft @ 27 GHz, <4.0 dB/ft @ 40 GHz, <5.9 dB/ft @67 GHz (typical), +0.3 dB per connector

CONNECTOR 1: GPPO/SMPM M, direct solder, straight, bulkhead, genuine Corning Gilbert P/N: B016-D33-01

CONNECTOR 2: SMA F, direct solder, straight, bulkhead, Connectronics Inc. P/N: 42-550-1, or equivalent

CABLE TYPE: Stainless steel semi-rigid outer conductor, (silver-plated solid beryllium copper (BeCu) center conductor), 0.086" (2.2mm) diameter nominal, Micro-Coax P/N: UT-85B-SS, or equivalent, additionally preconditioned per Mil-C-17G sec 6.6 for all assemblies 24-inches overall and below

MINIMUM INSIDE BEND RADIUS: 0.250" (6.4mm) with slotted mandrel special tooling, 0.500" (12.7mm) without special tooling

SOLDER: 96.5Sn3.0Ag0.5Cu (SAC305) Pb-free, COMPLIANT WITH EU Directive RoHS 3 (2015/863)

RF COAX INC.

1725 San Felipe Road, Suite 3
Hollister, CA 95023 USA
TEL: 831-635-0820, FAX: 831-785-2990
sales@rfcoax.com www.rfcoax.com
All rights reserved
File No: 0.06/0.15,7.56/19.2,0.12/0.3

CAGE 1WF56

RF Cable Assembly, GPPO M BH to SMA F BH, 0.086 stainless steel semi-rigid, BeCu center conductor, 27 GHz, 8-inches long overall, RoHS

TYPE: Product Specification

REVISION: A **Date :** 07/22/2025

Item : GS086MBFBSB-8R